



**ULPGC**

**University  
Library**

**DISCOVER**

# ROOMS and SPACES

## Reading rooms

## Collaborative workspaces

Intended for group work of the ULPGC university community for study, teaching and research purposes.

## International Space

Meeting and cultural exchange point for the internationalization of the ULPGC.



## Tafira CAMPUS



CENTRAL BUILDING  
GENERAL LIBRARY. BIG  
ECONOMIC SCIENCES, BUSINESS STUDIES  
AND TOURISM LIBRARY. ECO  
LEGAL SCIENCES LIBRARY. DER  
EUROPEAN DOCUMENTATION CENTRE. CDE



Basic Sciences  
Library  
BAS



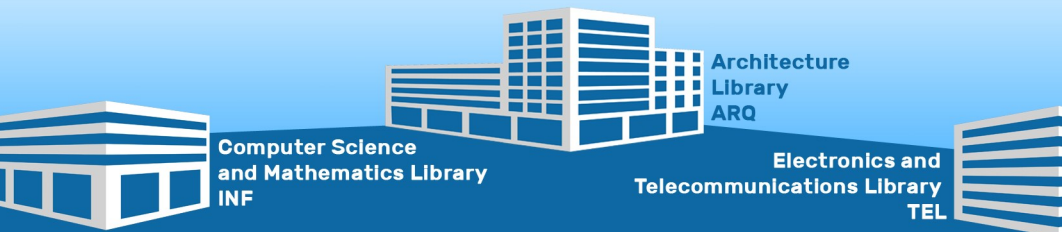
## Espacio Violeta

A fund specialising in feminisms and gender studies and, in addition, a different space for consultation and exchange of knowledge about women, egalitarian masculinities and the LGTBIQ+ community.



## Makerspace

It offers materials and technological tools for knowledge creation, entrepreneurship, and interaction with others.



**Computer Science  
and Mathematics Library**  
INF

**Architecture  
Library**  
ARQ

**Electronics and  
Telecommunications Library**  
TEL

# DIGITAL PORTALS

**Jable** Canary digital press archive.

**mdC** Canary digital memory.

**CRAAL** Resource Centre for Autonomous Language Learning.

**accedaCRIS** It collects the scientific production of the ULPGC.

And... so much more.

## TRAINING

### Specialized training

The library offers several virtual courses that are recognised by 1 credit for training activities.

### LibGuides

We have materials to support teaching, research, and learning.



Engineering  
Library  
ING



Physical Education  
Library  
FIS

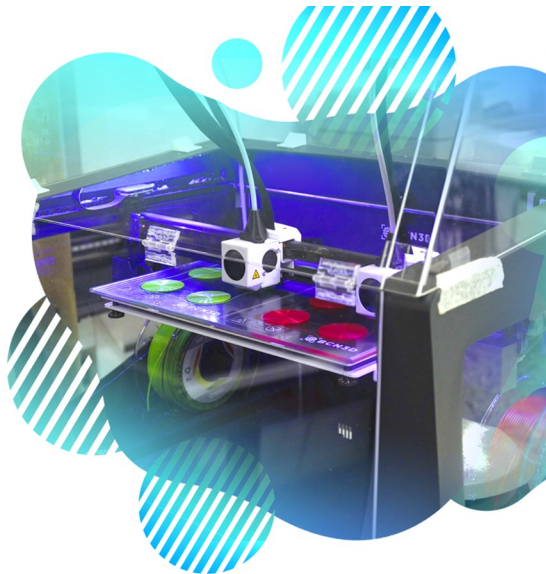


## Printing Services

Multifunctional devices that allow us to print, scan or photocopy.

## 3D Printing Services

For the entire ULPGC university community, located in Makerspace.



## Montaña Cardones CAMPUS

Veterinary Science  
Library  
VET



## Obelisco CAMPUS



Humanities  
Library HUM  
Teacher Training Library EGB

## San Cristóbal CAMPUS



Health Sciences  
Library  
MED



**CHECK OUT OUR BLOGS**

**FOLLOW US  
ON SOCIAL MEDIA**



**Blogs**



**Live  
CHAT**



**Library**

**Fuerteventura**



Teaching Unit for  
the Nursing degree  
**FEN**

**Tahíche  
CAMPUS  
Lanzarote**

Nursing  
Library  
**ENF**



**bu@ulpgc.es**



**(+34) 928 458670 / 8671**



**(+34) 626 210 811**